



TME-C-LED-WIND3D01



# Installation instructions MOTEUR RADIO A dimmer switch for 24V LED STRIP

**Installation must comply with NFC15-100 standard**

### Equipment not supplied

- Watertight junction box (IP54)
- Cable (A) 3G 1.5mm<sup>2</sup> (blue, brown, green/yellow)
- Distribution strip
- Cable (B) 3G 1.5mm<sup>2</sup> (black, brown, green/yellow)

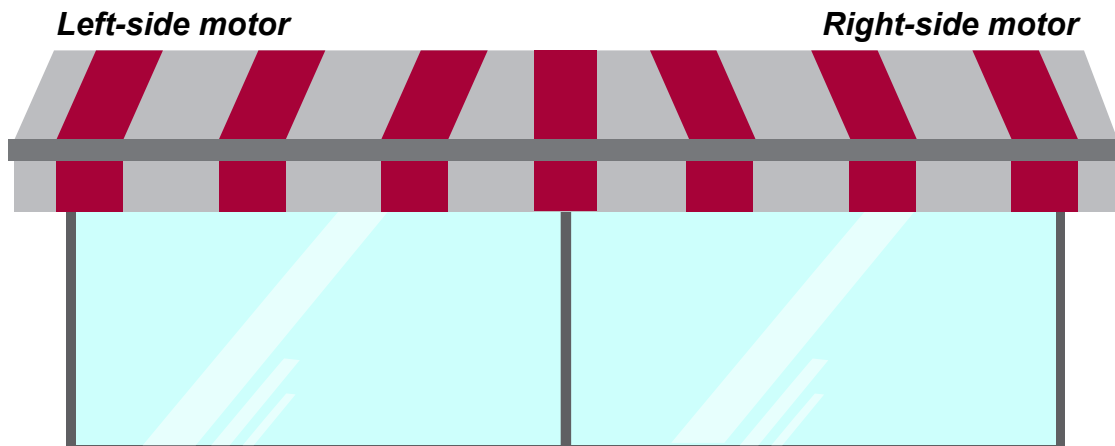


## ATTENTION



- If you have purchased a motor, all connection work must be carried out by a competent person to ensure that the installation complies with the terms and conditions of the warranty.
- For your own safety, before carrying out any installation or connection work, make sure that the power is switched off.
- Before connecting the product to a power source, make sure that the voltage of this power source and the rated current correspond to the power supply specifications shown on the product nameplate.
- A power disconnect device must be provided in the fixed wiring in accordance with installation regulations.
- If the power cord or cables are damaged, they should be replaced only by the manufacturer's repair service or by a qualified person. To avoid danger, do not carry out the repair yourself. The replacement power cord or cable must be of the same type.
- The torque and operating time must be compatible with the characteristics of your system.
- Switch off the power supply before connecting or handling your system.
- Control devices must be visibly installed 1.3m above the floor.
- Check the installation frequently for any imbalance or signs of wear.
- Do not use the appliance if any repairs or adjustments are required.
- Do not wet the motor at the end of the winding tube.
- For products fitted with remote control or automatic systems, disconnect the power supply when carrying out maintenance operations, such as window cleaning, in the vicinity of the system.
- Maintain a minimum horizontal distance of 0.4m between the extended motorised part and any permanent or fixed installation.
- If an automatic control system is used:  
The location where the control device is installed must allow the automation device to pick up signals easily in order to ensure the sensitivity of the control box.  
The control device must be installed vertically and protected from the weather.
- All installations must be de-energised when checking or servicing electrical equipment.
- Keep the equipment out of the reach of children. Do not allow children to play with the controls.
- The actuator is designed to be installed at a height of at least 2.5 m from the ground or any other level of access.
- Do not get the motor head, operator, remote control or vibration sensor wet.

## 1 - Location of the motor



**Position yourself facing your awning and determine the position of your motor.**

TMECLEDD0324AANG-12P

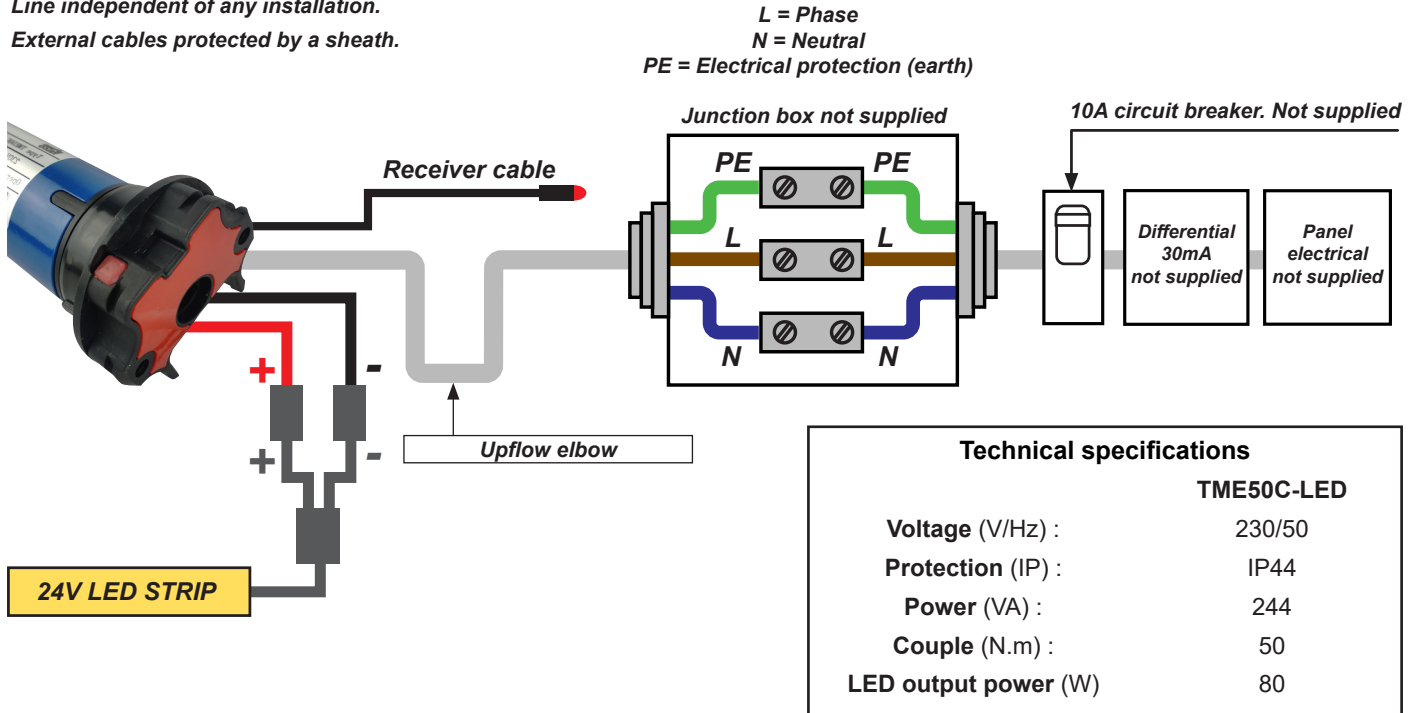
Non-contractual drawings

## 2 - Wiring. The motor is powered by a 24V LED STRIP (not supplied).

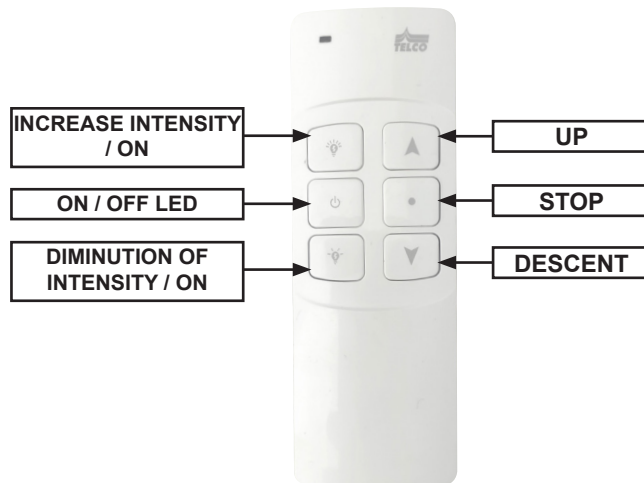
Waterproof connector required (LED ribbon connection)

Line independent of any installation.

External cables protected by a sheath.



## 3 - TELEVR-LED remote control



**Brightness control :**

**Switching the lighting on and off**



1 - Press ON/OFF once to switch on



1 - Press ON/OFF once to switch off

**Increasing brightness**



Press several times to increase the brightness. The button can also be used to switch on the lighting by pressing once.

**Brightness reduction**

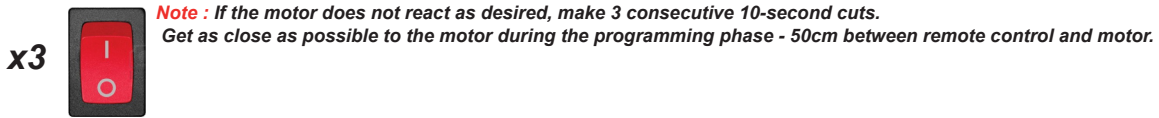
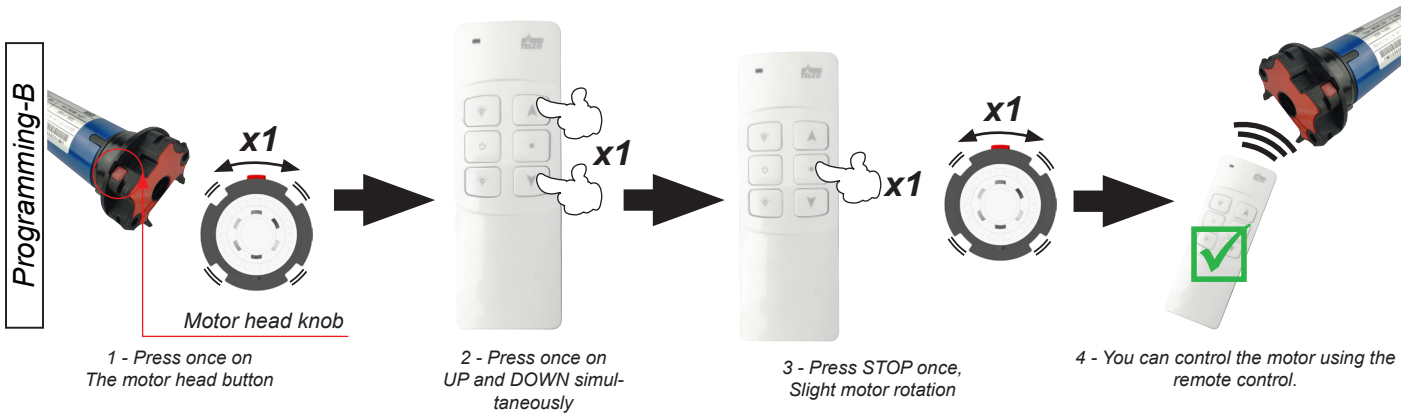
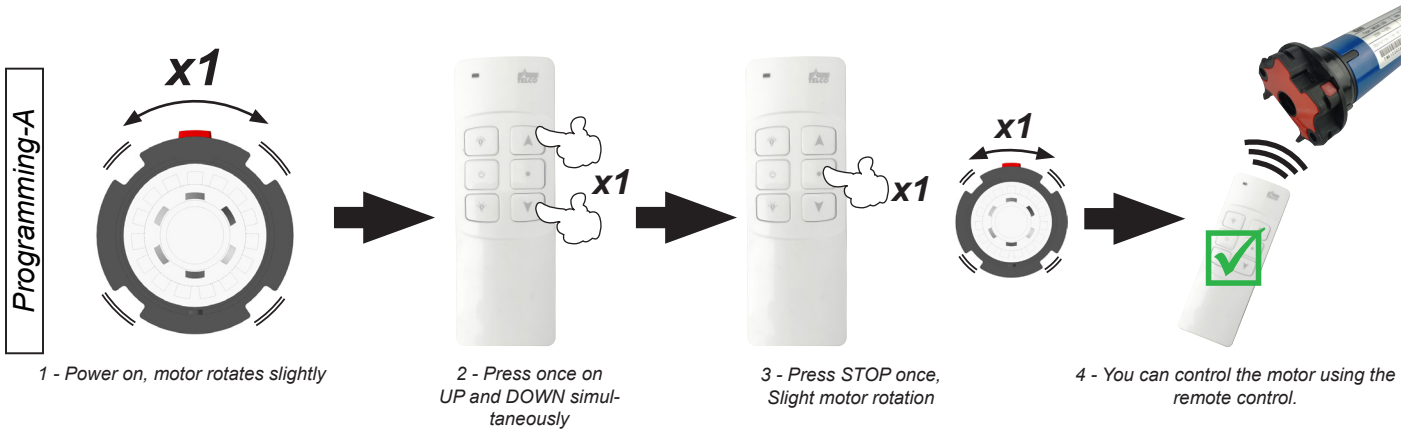


Press several times to dim the light. The button can also be used to switch on the lighting by pressing once.

## 4 - Remote control programming

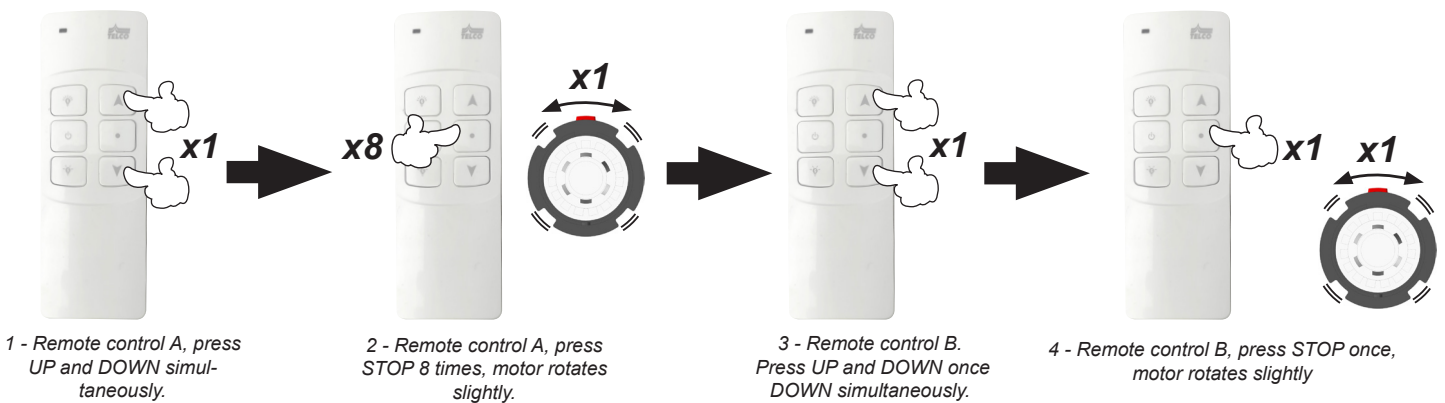
**ATTENTION :** c 2 programming methods available, PROGRAMMING-A or PROGRAMMING-B.

**Note :** Pulses should not be more than one second apart.



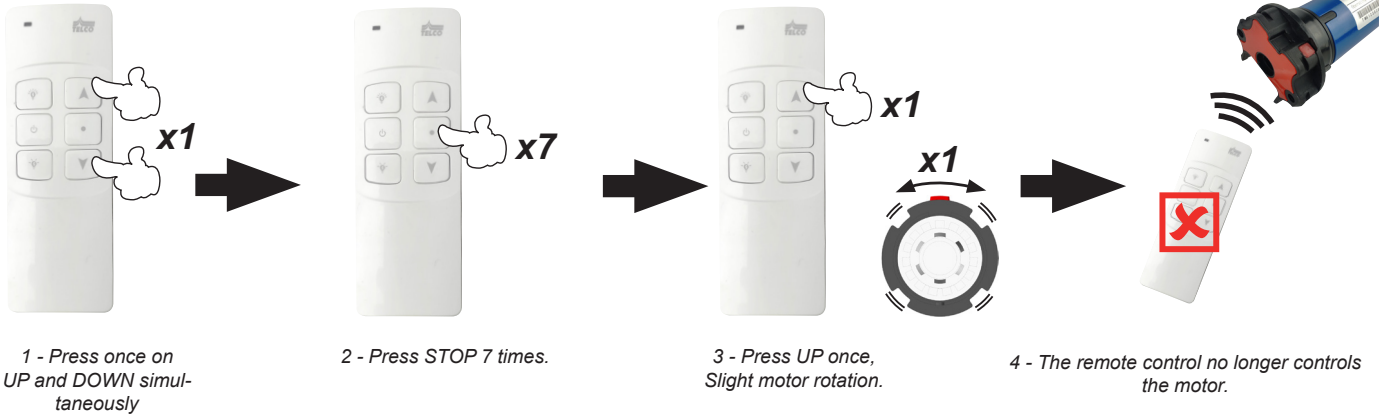
### 5.1 - Copy remote control code A to remote control B

**Note :** Pulses should not be more than one second apart.



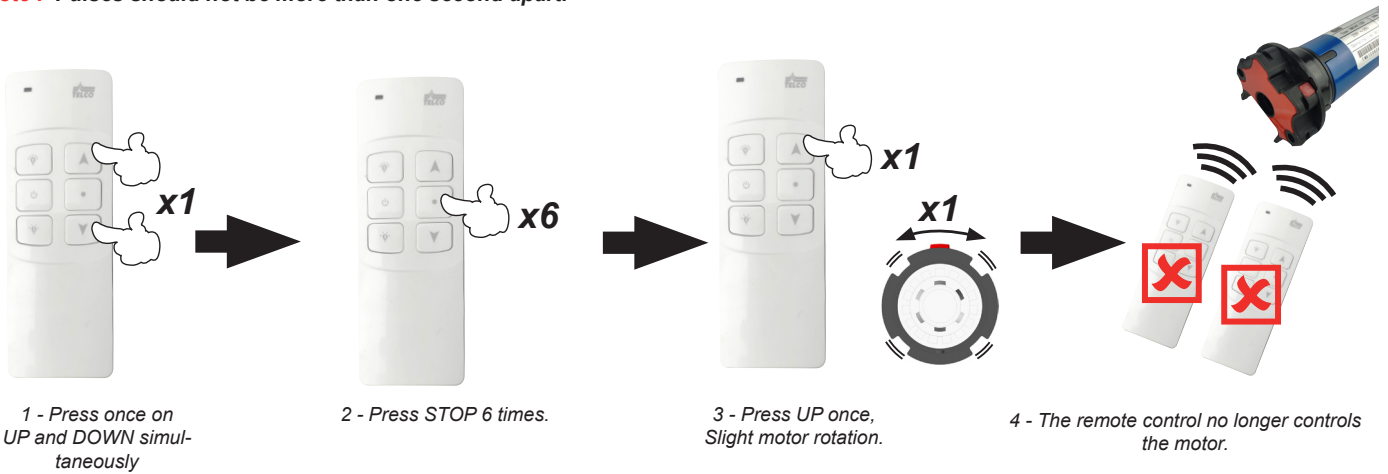
## 4.2 - Delete programming for a single remote control

**Note :** Pulses should not be more than one second apart.



## 4.3 - Delete all remote control programming

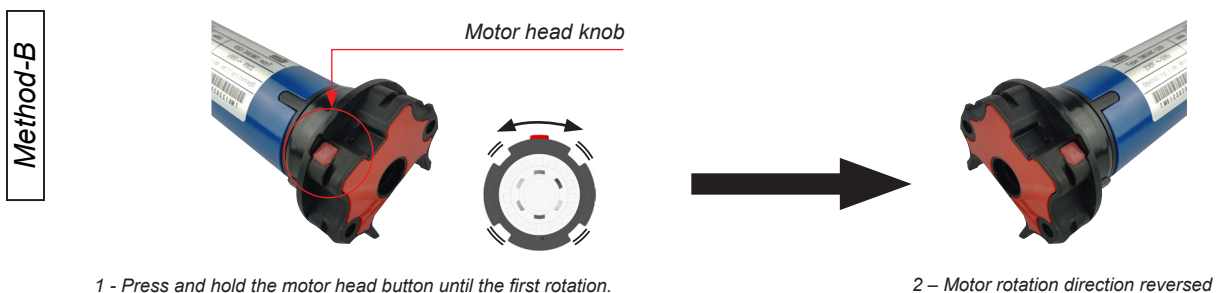
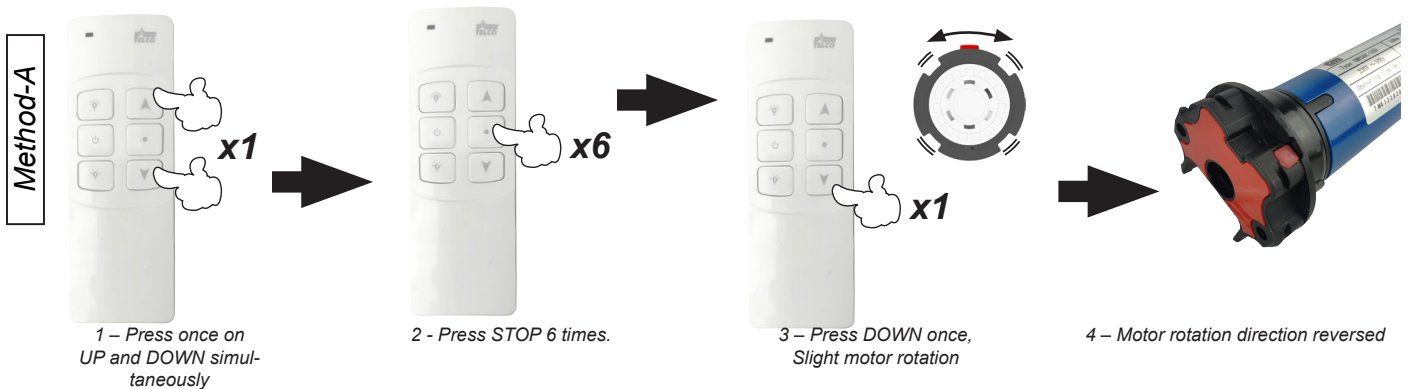
**Note :** Pulses should not be more than one second apart.



## 5 - Reverse direction of rotation

**ATTENTION :** 2 inversion methods available, METHODE-A or METHODE-B.

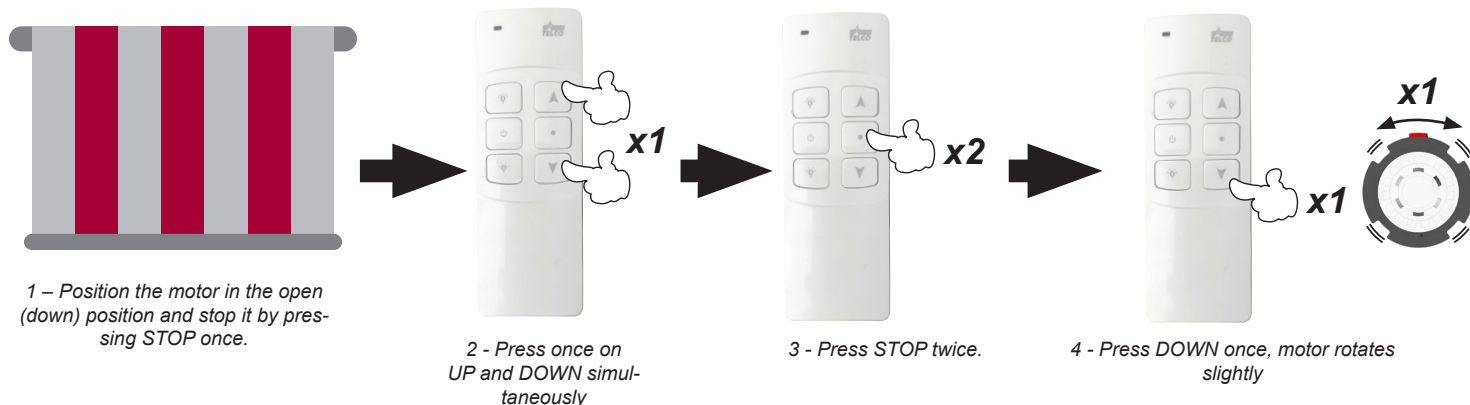
After completing this procedure, remember to delete the end stops created and then create new ones.



## 6 - Limit switch adjustment for AWNINGS

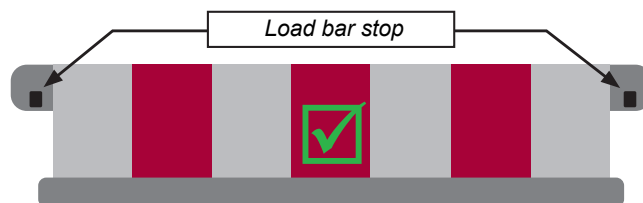
**ATTENTION :** The motor moves up a few centimetres each time it reaches the bottom stop.

### A - Adjustment of opening limit switch (low stop)



### B - Adjustment of closing limit switch (upper stop).

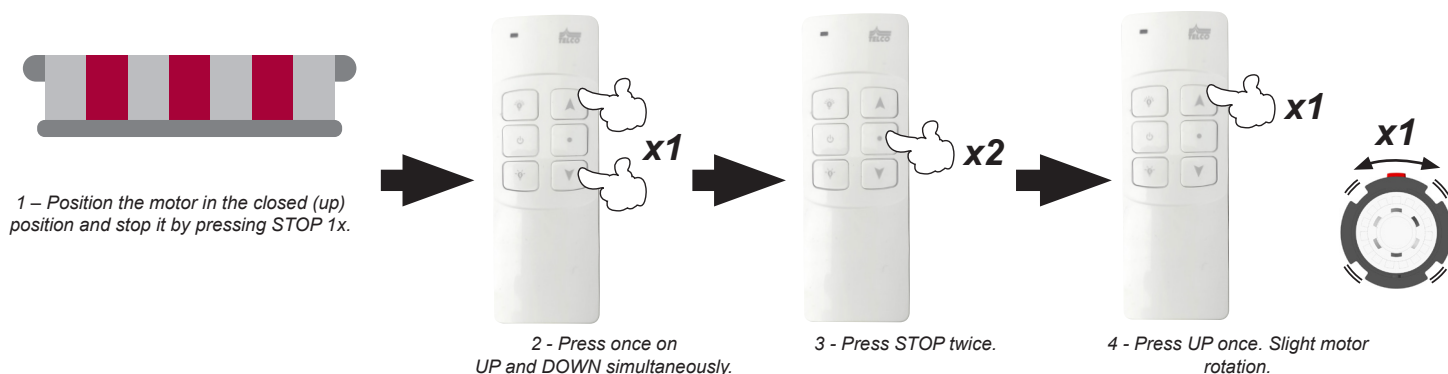
Once the opening stop has been set, the closing stop is automatically set the first time the blind is closed.



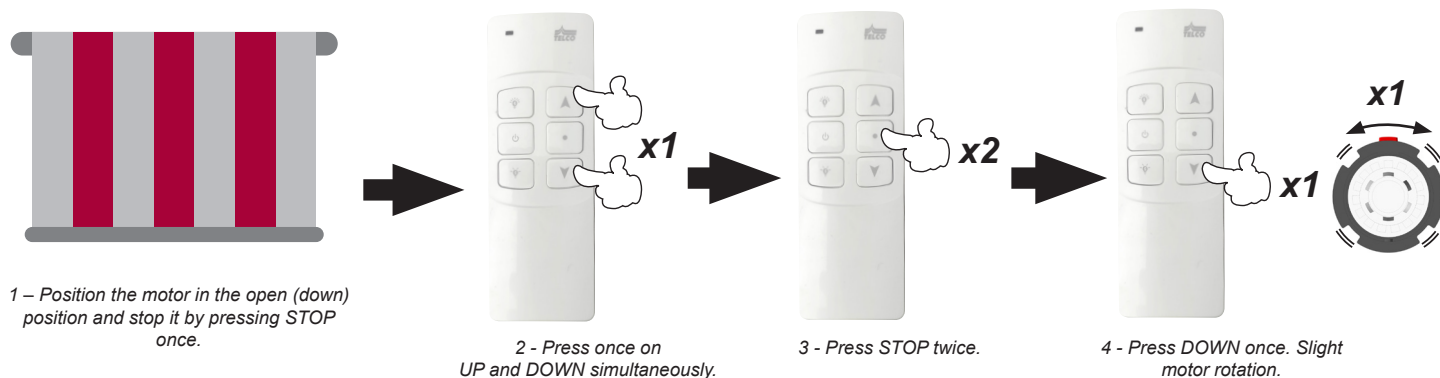
## 7 - Limit switch adjustment for Monobloc, Loggia.

**ATTENTION !** It is important to set the closing limit switch (upper stop) before the opening limit switch (lower stop)!

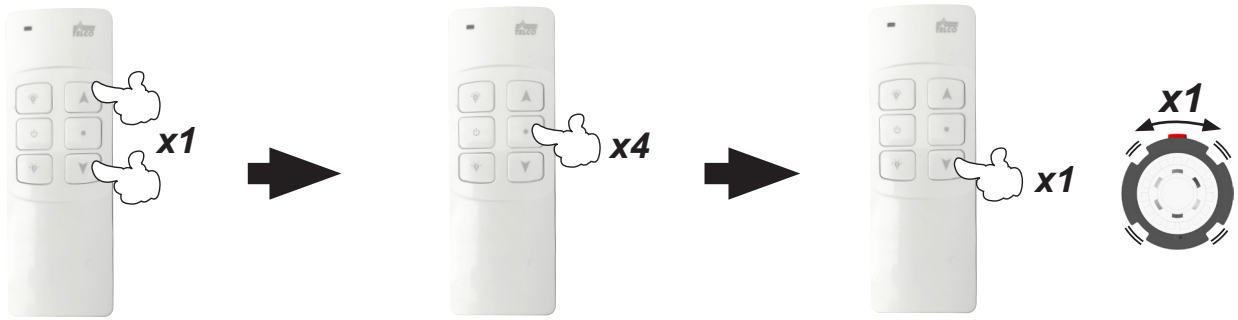
### A - Adjustment of closing limit switch (upper stop).



### B - Adjustment of opening limit switch (low stop).



## 8 - Removal of upper and lower stop simultaneously

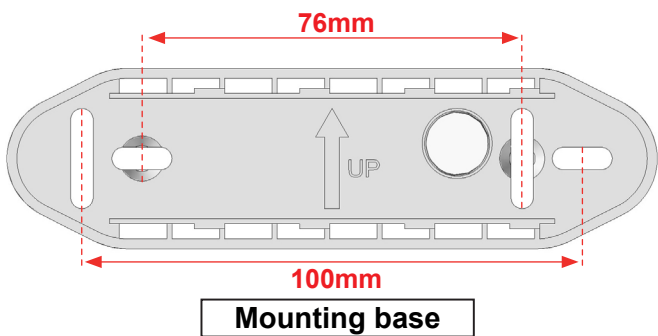


1 - Press UP and DOWN once simultaneously

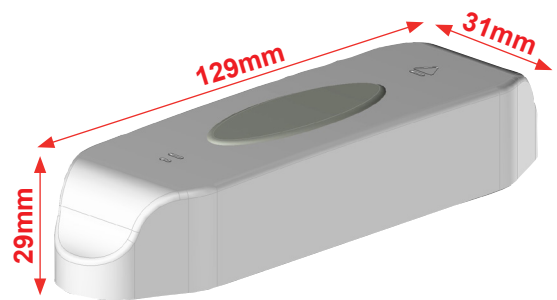
2 - Press STOP 4 times

3-Press DOWN once, motor rotates slightly

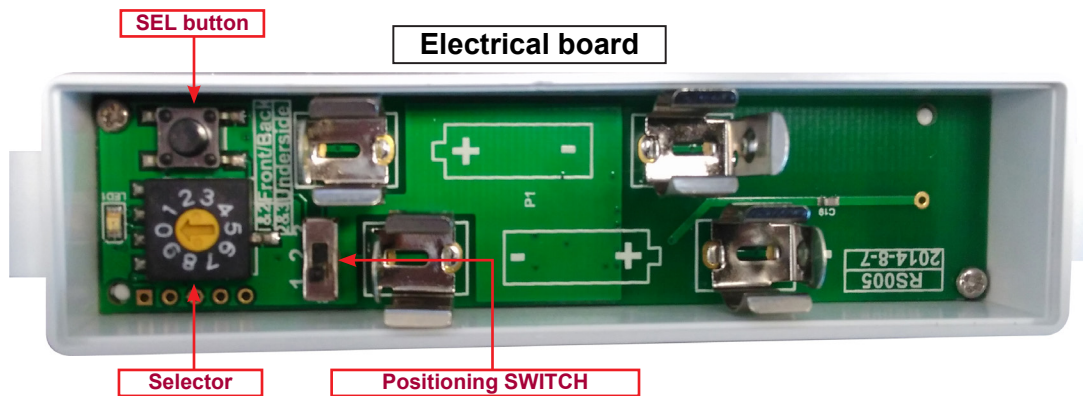
## 11 - OPTION AUTOMOWIND3D01



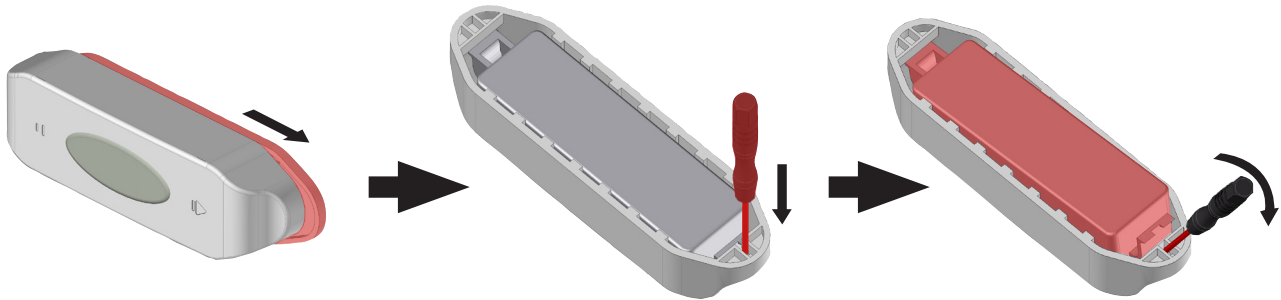
Mounting base



Housing



## 11.1 - Remove sensor.



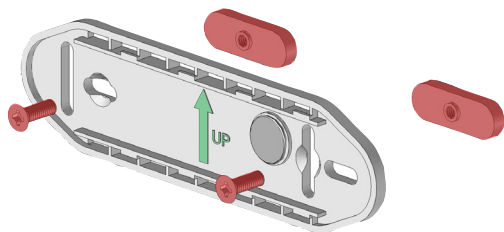
1 - Remove the base from the case.

2 - Position the supplied screwdriver.

3 - Lever out the circuit board.

## 11.2 - Fastening the base to the front bar

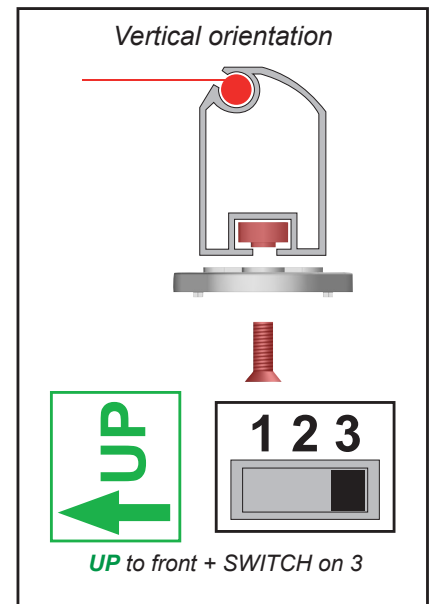
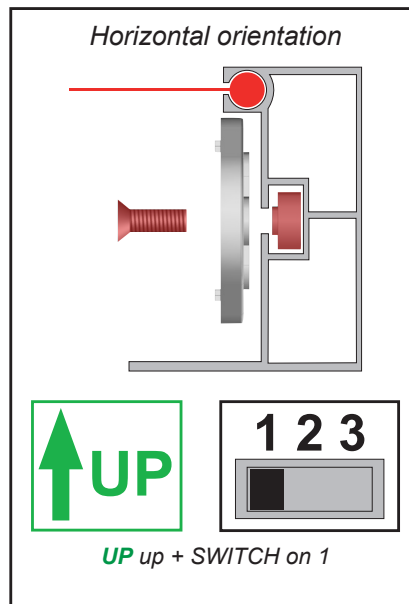
Horizontal or vertical orientation of the base support face.



Fasten the base to your awning's front bar using the screws and plates supplied.

Be careful to respect the position of the base and the position of the SWITCH on the electronic board, depending on the mounting chosen.

The base can also be fastened using the double-sided tape supplied.

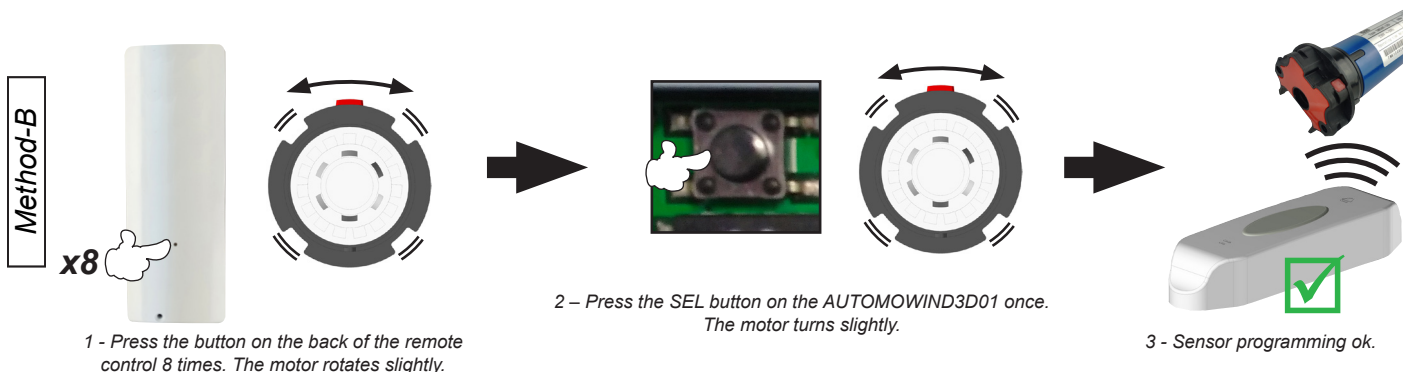
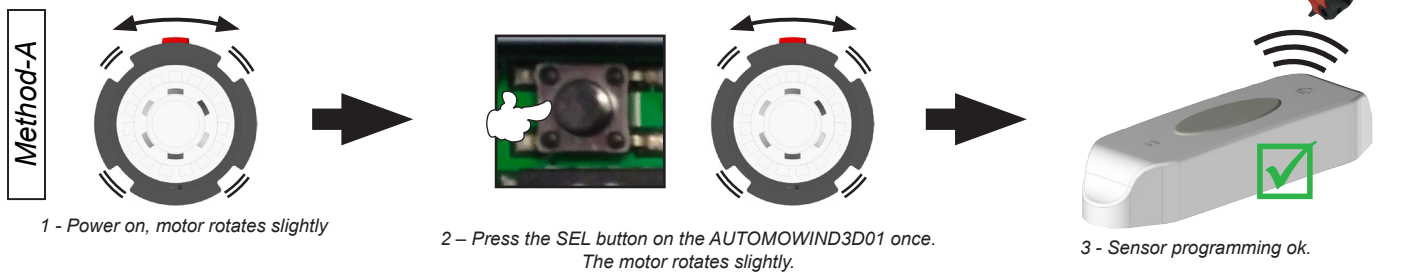


## 11.3 - Programming AUTOMOWIND3D01

**ATTENTION :** 2 programming methods available, METHODE-A or METHODE-B.

Make sure that the sensor is positioned correctly on the load bar and that the remote control settings are correct. The UP button should close the awning and the DOWN button should open the awning. If this is not the case, reverse the direction of rotation of the motor and reprogram the end stops.

**Note :** once the awning has been closed by the sensor, wait 30 seconds before reopening.



## IMPORTANT

- La programmation peut échouer en raison de l'interférence du signal. Dans ce cas réessayez en effectuant au préalable 3 coupures consécutives de 10s au niveau de l'alimentation du moteur.

- Veuillez à ne pas installer l'AUTOMOWIND3D01 par temps pluvieux.

### 11.4 - Setting the AUTOMOWIND3D01

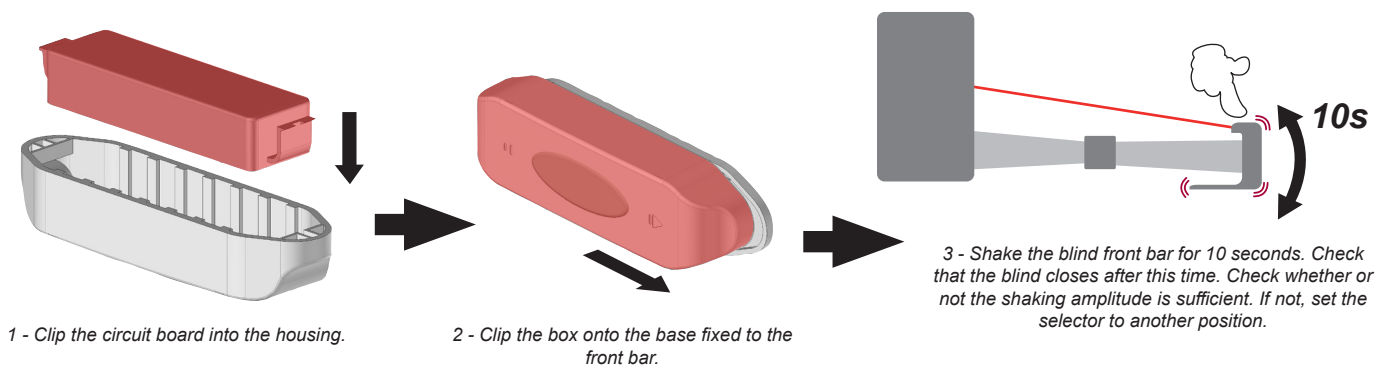
Select the desired sensitivity, (3-5) will suit most awnings, but carry out a test once the installation is complete to confirm the setting.



Angle of shock	Sensitivity Level	Angle of shock	Sensitivity Level
No function	0 do not use	$\pm 3.3^\circ$	5
$\pm 1.1^\circ$	1	$\pm 4.2^\circ$	6
$\pm 1.4^\circ$	2	$\pm 5.0^\circ$	7
$\pm 1.9^\circ$	3	$\pm 5.8^\circ$	8
$\pm 2.5^\circ$	4	$\pm 6.6^\circ$	9

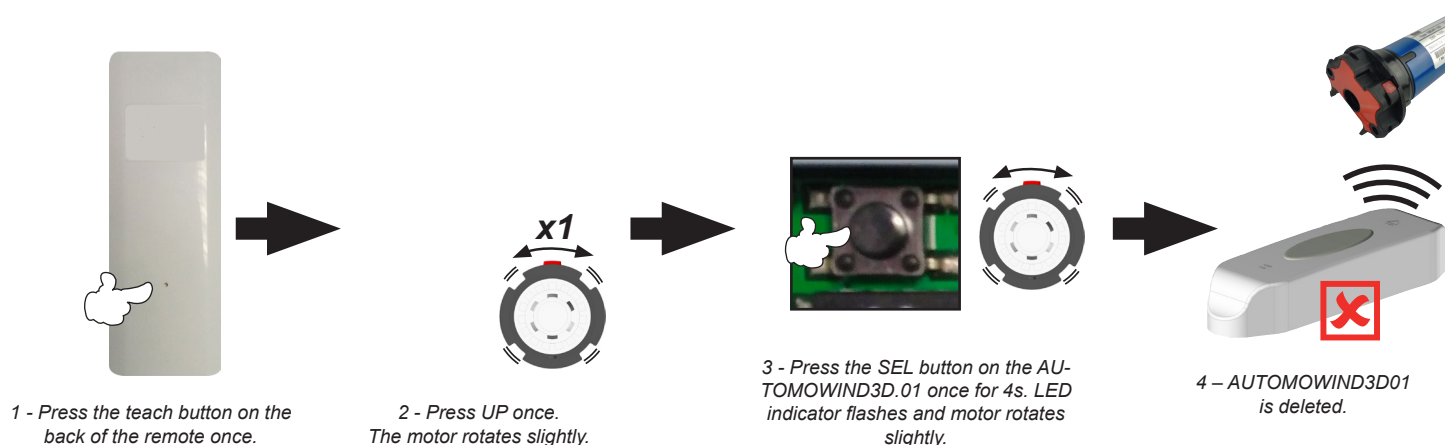
**Note :** The jerk angle corresponds to the maximum and minimum amplitude of the awning's load bar. These angles vary depending on the size of the awning and the position of the sensor. So make sure you have the right sensitivity by testing.

### 11.5 - Setting up AUTOMOWIND3D01



### 11.6 - Delete AUTOMOWIND3D01 programming

**Note :** Pulses should not be more than one second apart.





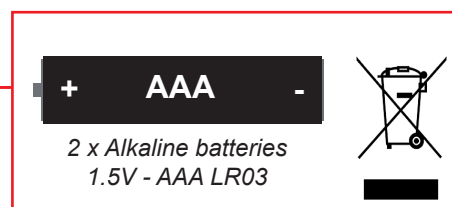
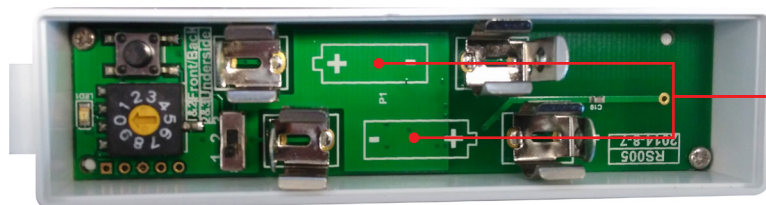
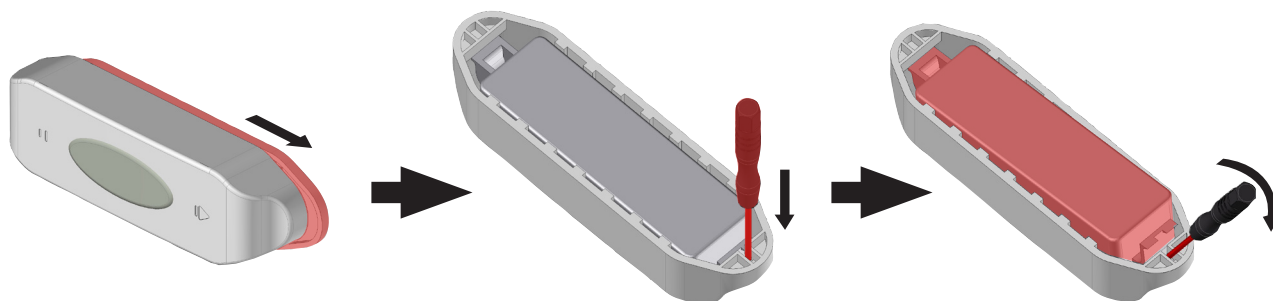
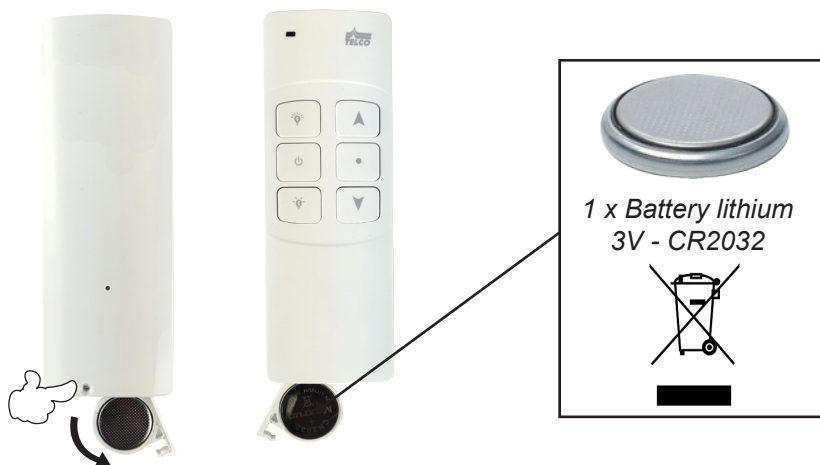
## CONSUMER INFORMATION

### IMPORTANT

- Programming may fail due to signal interference.
- When the AUTOMOWIND3D01 is triggered, motor control is inhibited for 30 seconds. It is therefore not possible to stop the awning during the closing phase.
- Be careful not to press the buttons for too long if the battery is almost empty. A button should be pressed for 0.5s at intervals of 1s. If the battery is empty, please replace it.
- Replace the batteries every 12 months or if the awning closes after 1/2 hour without wind.
  - The control box is live. Please do not place it in a damp environment.
  - Do not allow children to play with the control unit.
  - Ambient temperature :  $-10^{\circ}\text{C}$  to  $55^{\circ}\text{C}$ .
  - Do not pull on the LED Strip cables.
- Do not stress the LED Strip cables or the LED Strip.
  - Do not twist the LED strips.
  - Do not bend the LED strips, always lay them flat.
  - Handle LED strips with care.

## Battery replacement

	TELEVR-LED
Power	3V
Protection (IP)	IP20
Temperature operation	$-20^{\circ}\text{C}$ à $+60^{\circ}\text{C}$
Current	$<12\text{mA}$
Code	Rolling
Frequency	433.92MHz



## Battery warning. Keep out of the reach of children

- Store spare batteries in a safe place.
- Dispose of used batteries immediately and safely.
- If you have reason to believe that a battery has been ingested or placed in any part of the body, seek urgent medical advice.
- If the battery compartment cannot be closed securely, stop using the device and keep it out of the reach of children.
- Be careful, there are no obvious symptoms when a child has swallowed a button cell battery or any other type of battery.
- If your child doesn't seem to be doing well and has no obvious symptoms, check that there are no batteries missing from any equipment within their reach.
- If you have reason to believe that he has swallowed a button cell or any other type of battery, call the emergency services.
- Similarly, if your child vomits bright red blood, call the emergency services immediately.
- Always be careful with button batteries or any discharged or spare batteries, whether they are in products that contain them or elsewhere in your home.

*Keep out of reach of children*



Used electrical products must not be disposed of with household waste. Please use the specific facilities provided to deal with them. Contact your local authority or retailer for information on recycling procedures.

## Technical specifications

### TMS40-LED

**Voltage (V/Hz) :** 230/50

**Protection (IP) :** IP44

**Power (VA) :** 244

**Couple (N.m) :** 50

**LED output power (W)** 80

### TELEVR-LED

- 27 dBm

433.92 MHz

1

<70db(A)

### AUTOMOWIND3D01

- 27 dBm

433.92 MHz

1

<70db(A)



## DÉCLARATION DE CONFORMITÉ

### PRODUIT

MOTEUR A VARIATEUR DE LUMINOSITÉ POUR RUBAN LED 24V

### FABRICANT

TELCO HOME AUTOMATION

Z.I Point Sud 65260 SOULOM France

### OBJET DE LA DÉCLARATION

PRODUIT	MODÈLE
MOTEUR TUBULAIRE :	TMEC-LED
TÉLÉCOMMANDE :	TELEVR-LED
CAPTEUR DE VIBRATION :	AUTOMOWIND3D01

L'objet de la déclaration décrit ci-dessus est conforme à la législation d'harmonisation de l'Union applicable.

**Directive 2006/42/CE relative aux machines**

**Directive 2011/65/UE relative à la limitation de l'utilisation de certaines substances dangereuses dans les équipements électrique et électronique.**

**Directive 2014/53/EU Équipement Radioélectrique**

Références des normes harmonisées pertinentes appliquées, y compris la date de celles-ci, ou des autres spécifications techniques y compris la date de celles-ci, par rapport auxquelles la conformité est déclarée.

#### RED 2014/53/UE :

EN 301 489-1 V2.2.3:2019

Draft EN 301 489-3 v2.1.2:2021

EN 300 200-2 V3.1.1:2017

EN 50663:2017

EN IEC 55014-1:2021

EN IEC 55014-2:2021

EN IEC 61000-3-2:2019 +A1:2021

EN 61000-3-3:2013 + A1:2019 + A2:2021

EN 62233:2008

#### MACHINE 2006/42/CE :

EN 60335-1:2012 +A11:2014 +A13:2017 +A1:2019 +A14:2019 +A2:2019 +A15:2021

EN 60335-2-97:2006 +A2:2010 +A11:2008 +A12:2015

#### ROHS 2011/65/UE (2015/863/UE) :

EN 62321-1:2013

EN 62321-5:2014

EN 62321-6:2015

EN 62321-2:2014

IEC 62321-7-1:2015

EN 62321-3-1:2014

IEC 62321-8:2017

EN 62321-4:2014

EN IEC 63000:2018



**TELCO HOME AUTOMATION**  
S.A.S  
ZI Point Sud - Les Usines - 65260 SOULOM  
Tél. 04 68 38 21 87 - Fax : 04 68 38 21 45  
Siret 813 912 508 00013 - Code APE 2790Z

Fait à Soulom le 01.03.24  
M. ARPIN Frédéric Président

**TME-C-LED-WIND3D01**

